

If you can you use SAS, you can already use WPS

Same Language, Different Company

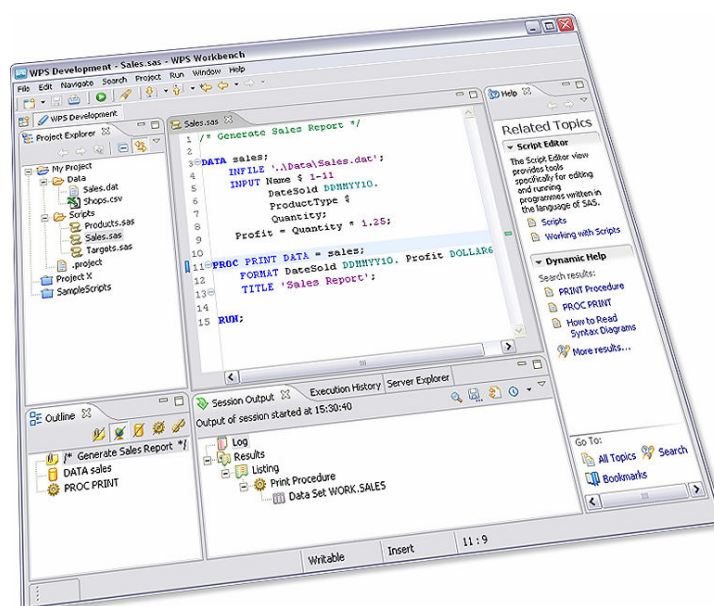
The World Programming System™ (WPS) provides a code interpreter that runs programs written in the language of SAS without the need for products from the SAS Institute. SAS programs running under WPS can typically do so without modification because WPS implements the Base SAS computer language plus selected features from SAS Access and other SAS Modules.

Support for SAS Users

WPS supports Base SAS Programming Language Elements. This means that programs developed in the SAS language may be run, edited, shared and saved in WPS. It also means that programs developed in WPS can be used in a SAS environment. In order to preserve your investment in data, WPS is able to read SAS 6.0, 7.0 and 8.0 datasets.

How WPS Differs From SAS

On the workstation, WPS has an outstanding user-interface developed in the latest style with must-haves such as user-defined colour editing, type ahead coding, user customized layouts, error logs, and history of program edits. As it is highly intuitive, existing SAS users are able to use it with minimal training.



Incorporated into the user interface is an interactive help system. This provides full context sensitive help that gets you to the information needed effortlessly.

WPS Includes a programming interface called WPSI. This allows the WPS application to be accessed directly by third party applications written in say C++, JAVA, or VB on the workstation and by ISPF or JCL on the Mainframe. This provides, for the first time, application developers the opportunity to develop and distribute programs written in the language of SAS in a run-time environment.

WPS is a single solution product that incorporates core SAS Language support, data access, and a user interface in a single product. What is more, there are no limitations on the number of observations you can process, and costs are very attractive for both Mainframe and Workstation platforms.

WPS Core

The core of WPS is written in C++. It is this core that provides the support to process SAS language elements. This same core is utilised by WPS running on either z/OS or the Windows platform. WPS also has a graphical user interface and this is written in Java.

Multi Platform Solution

You can install WPS on both Mainframe z/OS and Workstation platforms. On the Mainframe, WPS is particularly valuable for batch operations and for the running of third party applications. On a workstation, WPS provides an integrated development environment. The WPS workstation user interface has been developed using open source components to make it a fresh, modern and flexible product.

For Mainframe z/OS

WPS gives users for the first time, an alternative to SAS products without the need for costly re-writing of existing SAS programs. Amongst other connection options, there is specific Mainframe support for DB/2, VSAM, and Teradata.



WPS will be of particular interest to users wanting to reduce to a minimum the cost of running an existing portfolio of SAS programs or maybe running MXG at the lowest possible cost.

Where SAS is not considered to be of strategic importance or where cost containment is an issue – such as when upgrading to larger Mainframes would normally involve higher software license fees – choose WPS for z/OS. For those that want a choice for world leading analytics and information distribution, WPS is worth a look.

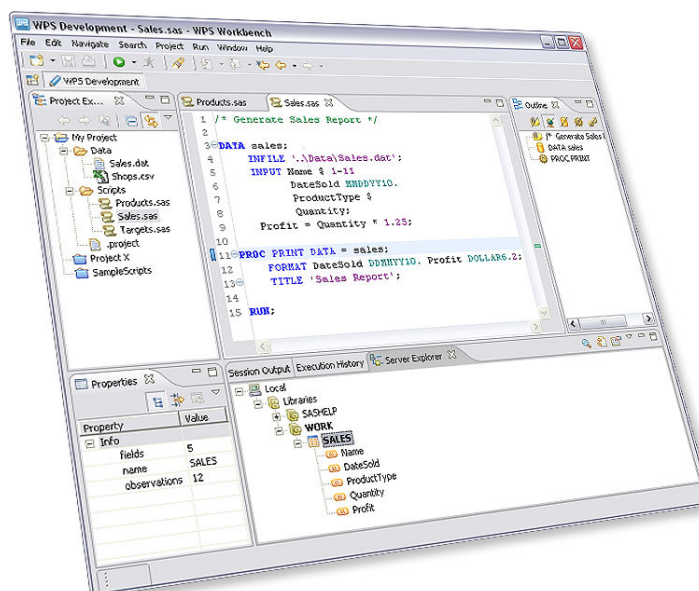
On the Mainframe, WPS can be used to take on the most demanding operational tasks from system performance monitoring to running end-user applications.

Installation is straightforward and can be completed by a systems programmer. A full installation guide is provided and support is available. This means installation time is kept to a minimum.

The only pre-requisite is a standard installation of z/OS.

For Workstation

On the Windows platform, WPS has the added benefit of a development environment known as the WPS Workbench. The WPS Workbench can be used for creating new and maintaining existing programs written in the language of SAS.

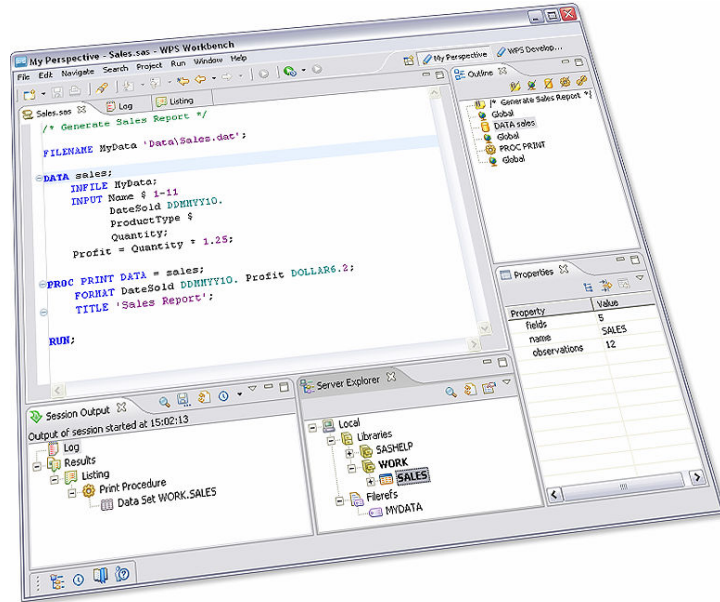


The WPS workstation user interface is a modern integrated development environment based on the Eclipse platform - supported by a wide-ranging consortium of vendors such as IBM and HP.

The user friendly GUI provides a program editor with colour highlighting and type ahead help, history control and the ability to manage your source code and projects.

User Customized Environments

The look of the WPS Workbench is user customizable. Within the main window, any number of child windows or views can be opened such as editors, logs, explorers and menus. These can be sized and positioned to the user's taste and screen size, and then saved under a user-defined name. Users can quickly and easily flip between different saved layouts.

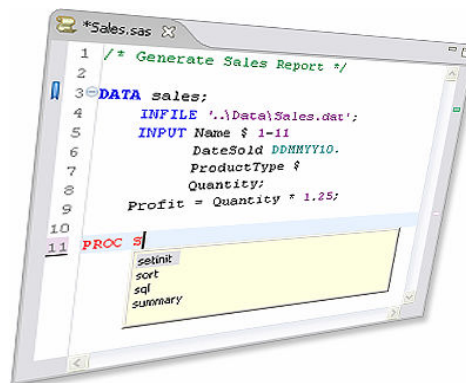


Project Management

WPS Workbench provides you with the facility to save a collection of scripts and results collectively as a project. Multiple projects can be worked on simultaneously.

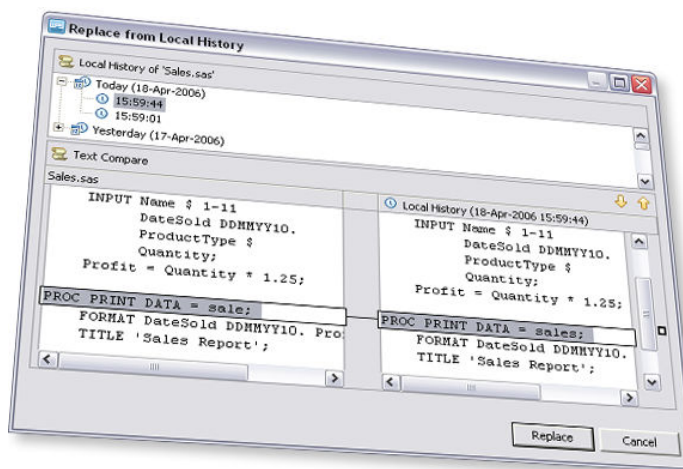
Program Editing

WPS Workbench has a rich set of functions to assist in editing scripts. These features range from syntax highlighting, find and replace, copy and paste to sophisticated search facility that can be as simple as scanning the script you have open to scanning all files in multiple projects. A bookmark facility allows you to tag a line in a script and days later automatically reopening the script and navigate back to the bookmark.



Script History

The WPS Workbench automatically keeps track of the changes you make to a script.



This means you can edit and even save a script but still be able to compare or revert back to an earlier version.

Run Time Environment for Application Developers

WPS has a programming interface called WPSI that can be called by programming languages such as C++, VB, or JAVA. Now you can develop an end-user application in any language and access the power of the SAS Language when needed.

For developers that want to provide end users the functionality of the SAS Language incorporated within an application, WPS can be distributed as a run time only module.

When running as a run time application, the WPS user-interface is not typically used. You can develop your own user-interface as part of an application.

WPSI may also be used for batch control of programs and run, for example, at pre-set times via a scheduling system, or triggered when a specified event happens, such as when a database field is updated.

Contact Information:

Web: www.worldprogramming.co.uk

Email: sales@teamwpc.co.uk

Post: World Programming Ltd,
Worsley Lodge,
Braishfield,
Romsey,
Hampshire,
United Kingdom.
SO51 0QF

© Copyright 2007 World Programming Limited

World Programming is not associated with the SAS Institute.
SAS and Base SAS are the registered trademarks of the SAS Institute.

